



COMMUNITY INFRASTRUCTURE STRATEGY:

YOUTH CENTRES



CITY OF CANNING





YOUTH CENTRES

Youth Centres are dedicated spaces where young people can engage in recreational activities, seek support, and develop important life skills. They are typically aimed at those aged between 12-25 years and staffed with Youth Workers, who support young people through a variety of activities and offer a safe, consistent presence.

Young people come from a variety of backgrounds and often have diverse needs. However, they share a common need for safe places to participate in recreational activities and safe adults to seek support from. Youth Centres provide young people with a space to develop and feel a sense of belonging and ownership, which can contribute to their personal growth and development. Youth Centres can provide structured and targeted programming to assist young people in developing practical life skills, as well as the development of positive personal attributes, such as resilience.

The low-pressure environment provided in a Youth Centre can also provide young people with a safe path to seek help and support and link those with complex needs to more specialised services.



CURRENT DELIVERY

The City currently provides two dedicated Youth Centres as follows:

Willetton Youth Centre - provides support to young people in the support to young people in the neighbouring suburbs. The Youth Centre provides a recreational space, quiet spaces, and a dedicated music room.

Lynwood Youth and Family Hub - provides a recreational space, quiet spaces, and is situated on a small neighbourhood park with a basketball court and temporary skate park.

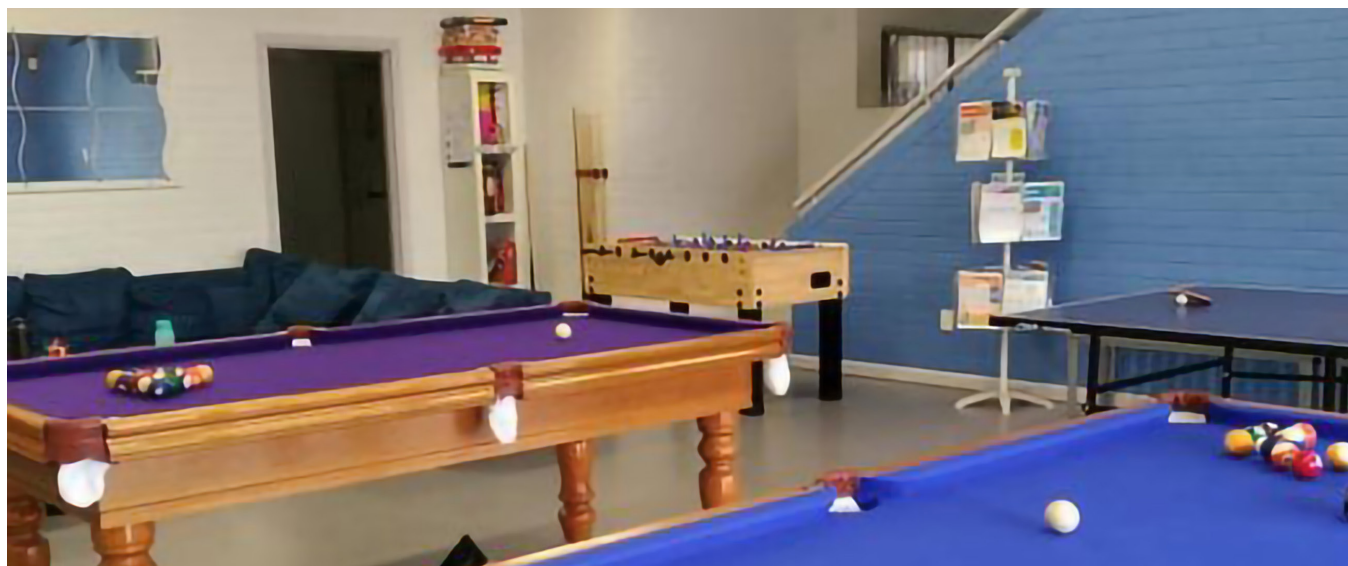
In addition, pop-up youth spaces utilising existing infrastructure are regularly established, such as Cannington Youth Space located at Cannington Leisureplex.



City of Canning Youth Centres

Facility	Hierarchy	Components	Strength	Weakness
Willetton Youth Centre	District	<ul style="list-style-type: none"> Recreational space Quiet Space/ Chill Room Kitchen/Wet Area Music Studio DJ Booth 	<ul style="list-style-type: none"> Central location near schools, public open space, and shops Building accommodates varied Youth Centre activities 	<ul style="list-style-type: none"> Music Studio has limited capacity for soundproofing or booth recording Ageing infrastructure Underutilised during the day (outside of drop-in hours)
Lynwood Youth and Family Hub	District	<ul style="list-style-type: none"> On-location Office Space Recreational Space Quiet Room/Chill Room Kitchen/Wet Area 	<ul style="list-style-type: none"> Located near Lynwood Senior High School and public open space Adjacent to skate park and basketball infrastructure Office space for Youth staff facilitates better responsiveness to community needs 	<ul style="list-style-type: none"> Ageing Infrastructure No infrastructure for specialised programming Located close to housing Poor disability access

CASE STUDIES



WILLETTON YOUTH CENTRE

Willetton Youth Centre is located within the Willetton Sports Precinct. The Centre is convenient to Southlands Boulevard Shopping Centre and Willetton Senior High School, adjoining Burrendah Park. The Centre has proudly been a long-standing support for young people in the City of Canning, providing a place to chill out and seek help for almost 20 years.

The Centre provides young people aged 11-25 years with a casual space to enjoy recreational activities, seek support from Youth Workers, and relax in a low-pressure environment. The Centre also provides a music studio space, with a dedicated jam room and music recording capabilities.

Young people can enjoy a variety of activities in the recreational spaces, such as playing pool, table tennis, and gaming on the video game consoles. Up and coming musicians have access to a fully equipped jam room with guitars, drums, keyboards and a PA system to practice their skills, and access to professional recording equipment.

The Willetton Youth Centre is open three days a week for after school drop-in and is entirely free to access.

CASE STUDIES

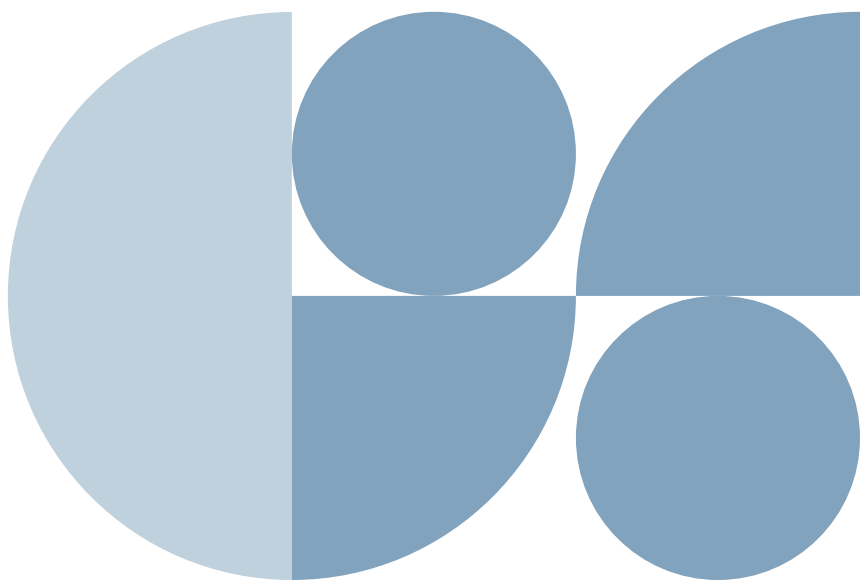


LYNWOOD YOUTH AND FAMILY HUB

Lynwood Youth and Family Hub provides spaces for youth services staff and local community services organisations to identify and address the needs of young people in the Lynwood area. Situated at Edgeware Park, Lynwood Youth Hub provides young people aged 11-17 years with space to participate in recreational activities, upskill, and seek support through various City of Canning and partner programs.

Lynwood Youth and Family Hub co-locates office space for the Youth Services team and other youth services organisations. The facilities offer responsive and holistic support to young people from a central location, which is entirely free to access.

Lynwood Youth and Family Hub is open four afternoons a week during school terms and also runs school holiday programs throughout the year.



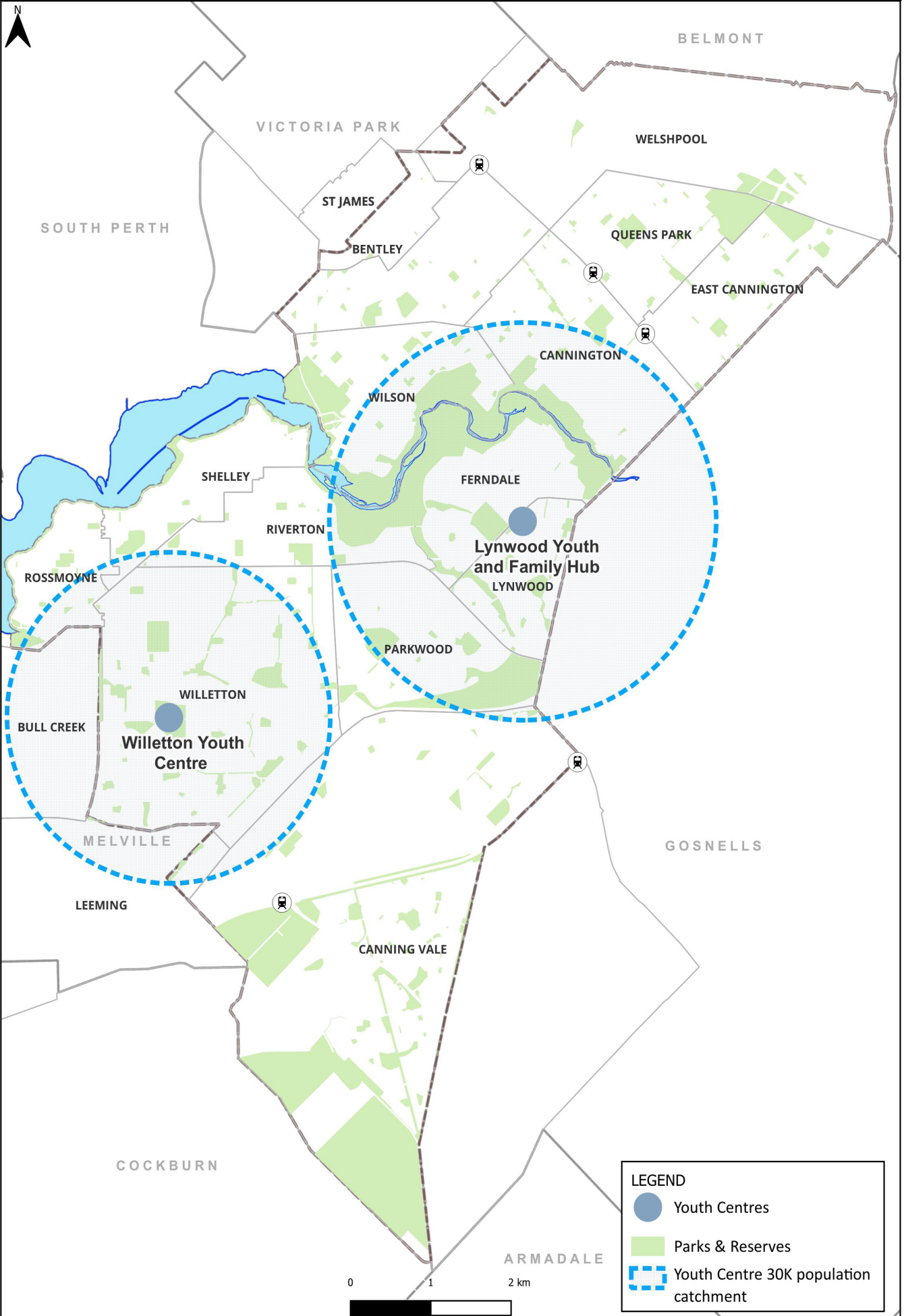
INDUSTRY PROVISION RATES AND BENCHMARKING

The Parks and Leisure Australia, Western Australia (PLA WA) provides the following guidance for the provision of youth services.

Facility Hierarchy	Definition	Population guideline
District	A centre providing leisure activities and advisory support for young people. To provide space for a youth worker, employment training programs, drop in areas, formal areas and outreach programs	1:20,000-30,000
Neighbourhood	This size of facility is generally not provided as stand alone and instead as part of a community hall or similar neighbourhood facility. Small local meeting rooms and activity spaces.	1:7,500
Local	Supplemented by access to youth meeting areas such as skate parks / informal BMX tracks / dedicated spaces within public open space.	No provision guide



YOUTH CENTRES



CURRENT PROVISION

The PLA WA guidelines and hierarchy reveal a deficiency in current provision of a district level youth centre to meet Canning's current population.

Further the delivery of neighborhood youth services should be increased within existing community halls and other appropriate places to ensure equitable opportunities for youth participation and engagement throughout the City.

TRENDS

Youth infrastructure provision varies significantly across Local Government Authorities (LGAs). The role of LGAs in this space is to be responsive and agile when considering individual demographic needs in a local area.

The following trends need to be considered with regard to youth infrastructure provision:

Youth facilities are often designed as collaborative spaces that provide a safe and inclusive environment for young people to interact and connect. These spaces are multi-functional and offer a range of activities and services, such as sport, arts, and educational programs.

Youth facilities are diversifying their services to meet the varied needs of young people. For example, some facilities are offering vocational training and employment services, while others may focus on supporting young people from diverse cultural backgrounds.

There is an increased focus on facilities and programs relating to mental health, with growing recognition of the importance of mental health support in the youth population. This has led to increased investment in mental health service and facilities.

Technology has been increasingly integrated into youth facilities, to provide innovative solutions for engaging with young people. For example, digital platforms and tools are being used to provide online counselling, peer support, and information about health and wellbeing.

In 2021, the suburbs of Bentley, Willetton, Cannington and Canning Vale had the highest number of youth aged between 12-26 years (forecast.id).

THE FUTURE

The City does not provide equitable distribution of youth facilities across the City, with some suburbs being under-serviced and requiring an increased youth focus in the future. Bentley is one example of where youth services and infrastructure are limited and the community would benefit from the provision of future youth focused infrastructure.

Population projections for the City indicate that the youth population will continue to grow to 2041, Bentley, Cannington and Willetton are expected to continue to have the highest youth population through to 2041. The suburbs of Queens Park and Canning City Centre will also be high growth areas for this age group. As such, the suburbs/areas of Cannington, Canning City Centre and Queens Park will need to be considered as focus areas for new youth activities. Ageing youth infrastructure assets will require investment and upgrade to meet contemporary service delivery models. This will need to be informed by consultation and robust planning.

PROVISION STANDARDS

The City's Youth Centres are to be based on demonstrated need and form part of other community infrastructure. They are not to be designed as standalone facilities, in line with the CIS principles and other City guiding documents.

Youth Centres	Role
District Level	
1:20,000-30,000 people	A district level facility, provides opportunities for services, leisure, programs and advisory and outreach. These facilities are dedicated but not provided as stand alone and should be provided as part of other community infrastructure. All youth centres and based on demonstrated need.
Neighbourhood Level	
Neighbourhood	Youth Centres at a neighbourhood level can be provided as popup or short term service offerings at existing Aquatics, Indoors Sport and Community Halls across the City.

CONSULTATION FINDINGS

This Type received 13 responses, with 12 from a suburb within the City. Of these, 9 are currently using this type of infrastructure. All strategic directions and recommendations proposed were supported.

Summary of Consultation	
Survey Questions	Results
Surveys Completed	11
From a suburb within the City of Canning	11
Already using Youth Centres in Canning	8
Addition consultation activities specific for this Type	Youth Consultants Network workshop Youth Newsletter Cultural Ambassadors Huddle

Survey Response Results

	Support	Neutral	Oppose
Strategic Direction 1 - There is a gap in the provision of district youth facilities across the City	8	1	2
Strategic Direction 2 - While it is noted that dedicated youth infrastructure such as youth centres may not always be required, investing in co-located youth infrastructure and youth activity spaces is crucial to ensure equitable opportunities for youth participation and engagement.	9	0	2
Strategic Direction 3 - Future youth infrastructure projects should be situated near other youth-focused resources and community infrastructure to establish a comprehensive and interconnected network of resources for the City's youth.	9	1	1
Recommendation 1 - Develop a needs assessment and business case to address the service gap at a district youth centre level. It will consider pop-up youth sites and integration into future infrastructure projects across the City. Consideration to be given to additional youth services at key locations throughout the City as existing infrastructure is refurbished or upgraded.	9	2	0
Recommendation 2 - The City will work with schools, support services, community organisations and government agencies to identify other locations for delivery of youth services across the City.	11	0	0

KEY THEMES

Feedback was provided regarding services offered such as enhancing access for neurodivergent participants under the NDIS and feedback about integrating services, such as combining libraries and youth centres, and including designated breakout areas to enrich the functionality and appeal of these spaces.

Promotion: Feedback highlighted that some respondents were unaware of existing infrastructure within the City.

A need for youth centres specifically in the areas of Bentley, St James, and Wilson, and a desire for varied spaces and activities within these centres was identified.

KEY FINDINGS

There was high levels of alignment between the Strategic Directions & Recommendations developed by the City and the respondents.

Responses for this Type emphasised the importance of developing service provision, not just the physical infrastructure itself. This suggests a need for an more holistic approach to planning and developing these facilities. This can be addressed through the strategic directions and recommendations.

CONSULTATION RECOMMENDATIONS

1. No changes to the Strategic Directions
2. No changes to the Recommendations

STRATEGIC DIRECTION



There is a gap in the provision of district youth facilities across the City.



While it is noted that dedicated youth infrastructure such as youth centres may not always be required, investing in co-located youth infrastructure and youth activity spaces is crucial to ensure equitable opportunities for youth participation and engagement.



Future youth infrastructure projects should be situated near other youth-focused resources and community infrastructure to establish a comprehensive and interconnected network of resources for the City's youth.

RECOMMENDATIONS



Develop a needs assessment and business case to address the service gap at a district youth centre level. It will consider pop-up youth sites and integration into future infrastructure projects across the City. Consideration to be given to additional youth services at key locations throughout the City as existing infrastructure is refurbished or upgraded.



The City will work with schools, support services, community organisations and government agencies to identify other locations for delivery of youth services across the City.





